

## POST-PROCEDURE CARE

- Discomfort or pain may be experienced for a few days after the procedure. Please take the medicines according to doctor's prescription, including pain killers and antibiotics.
- Healing of abscess can be slow depending on the size and depth of the abscess.
- After discharge home, please follow up as scheduled for removal of dressing.
- Keep the wound clean and dry. This is to prevent infection.
- Do not apply any cream or herbal remedies around or in the wound.
- You may take a shower but keep the dressing area dry.
- Contact your Doctor immediately if there is any worsening or changes to the wound area such as redness, swelling or increased pain. If wound does not improve, patient may need to be referred to a specialist doctor in hospital.

**For more information,  
contact us at:**



+673 3372709 /  
+673 3373033



+673 7295428  
(WhatsApp text only)



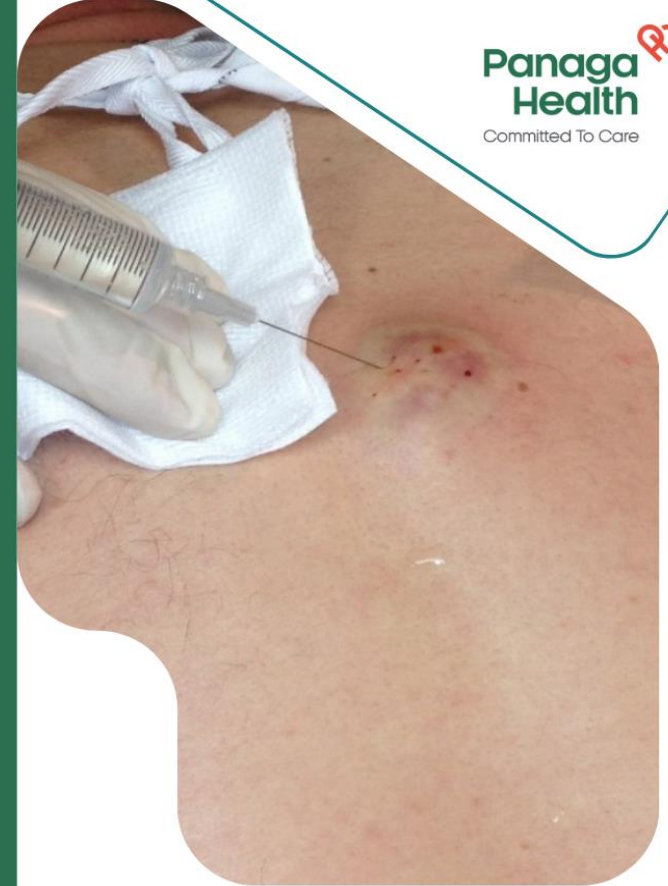
phc@bsp-shell.bn



www.panagahealth.com



panagahealth



**Panaga  
Health**  
Committed To Care

**PROCEDURE:  
INCISION AND  
DRAINAGE OF  
ABSCESS**

## WHAT IS INCISION AND DRAINAGE OF ABSCESS?

An abscess is a localized collection of purulent fluid (or commonly called “pus”) that can affect any part of your body. Through the Incision and Drainage procedure, purulent fluid can be drained to relieve symptoms and send to the laboratory for analysis if required.

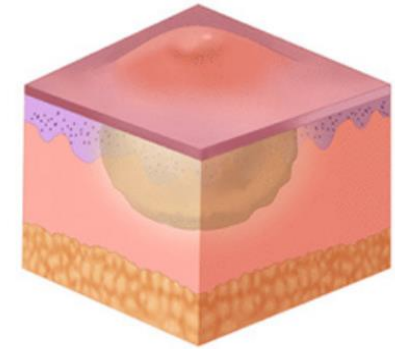


## PROCEDURAL PREPARATION

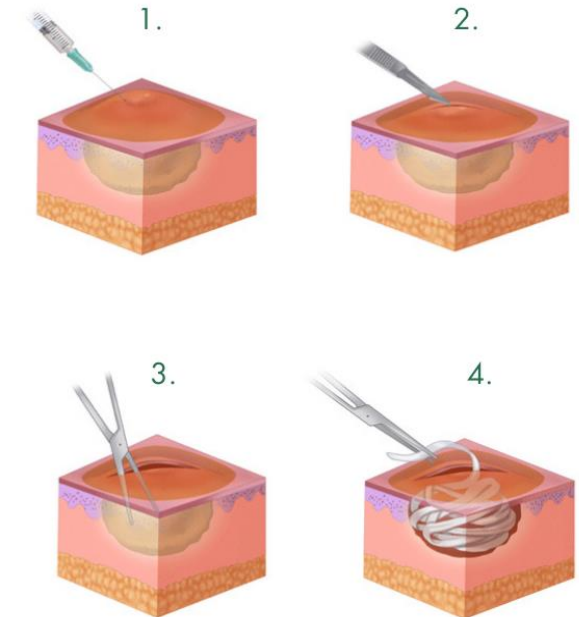
- Done as emergency procedure.
- A consent form will be given to the patient after explanation of the procedure, post care and complications by the doctor.

## PROCEDURE

1. On the scheduled procedure day, the procedure will be performed with aseptic technique under local anesthesia.
2. An incision is made directly into the abscess to allow the pus to drain out once the area is numb.
3. Draining the collection of pus out of the abscess.
4. Packing is done where the open area of the abscess is inserted with cotton ribbon gauze with antiseptic.
5. The packing is changed every 1 to 2 days till the cavity heals from its depth towards the skin.



**Abscess**



## POSSIBLE RISK AND COMPLICATIONS

- Pain
- Bleeding
- Delayed wound healing
- Recurrent abscess formation
- Scarring